



**SEEIF**  
Ceramic, a.s.

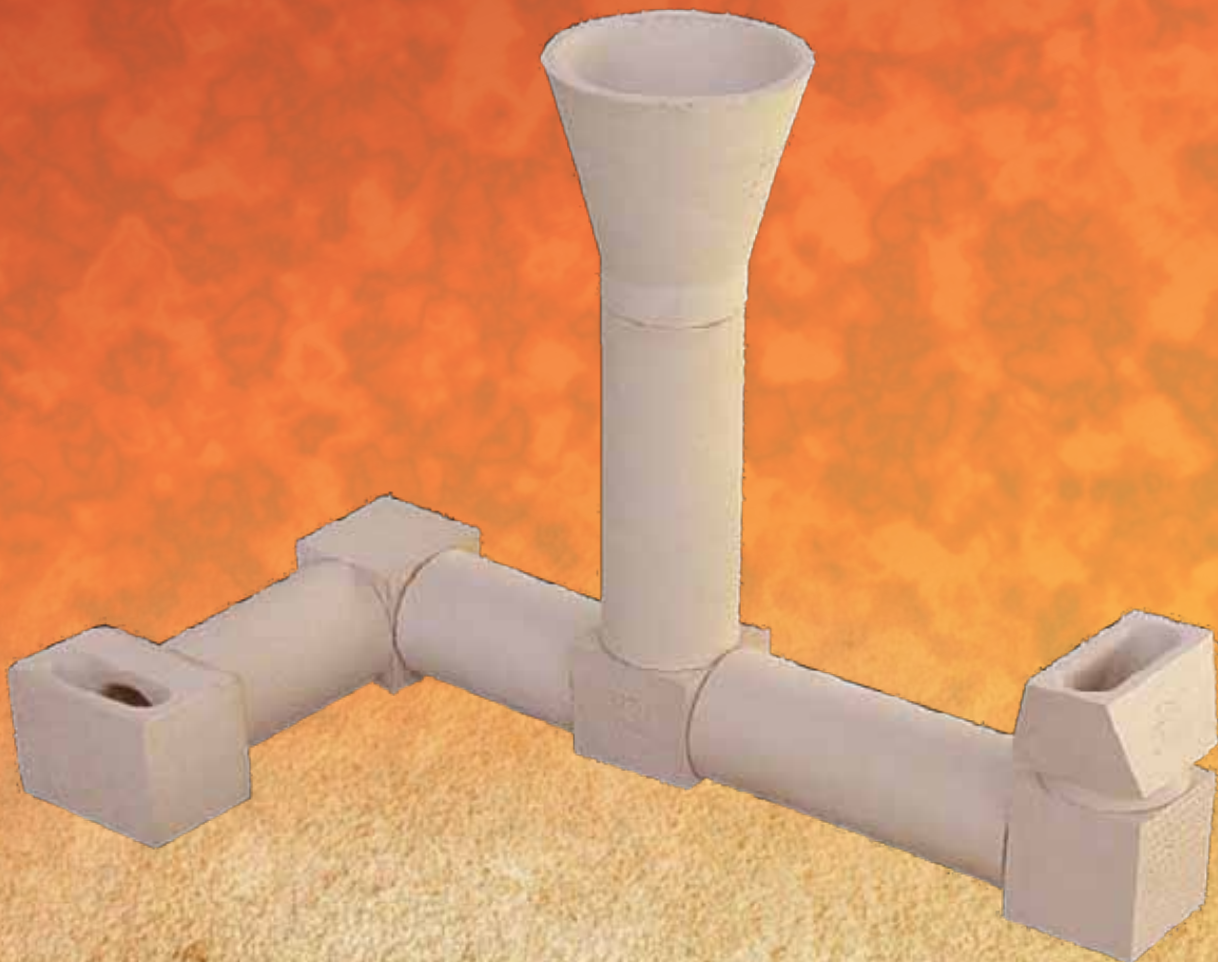
Line  
Series

**K**

**GATING SYSTEM**  
**EINGUSS-SYSTEM**

**REFRAMO**

Plant 04 REFRAMO  
Werk 04 REFRAMO

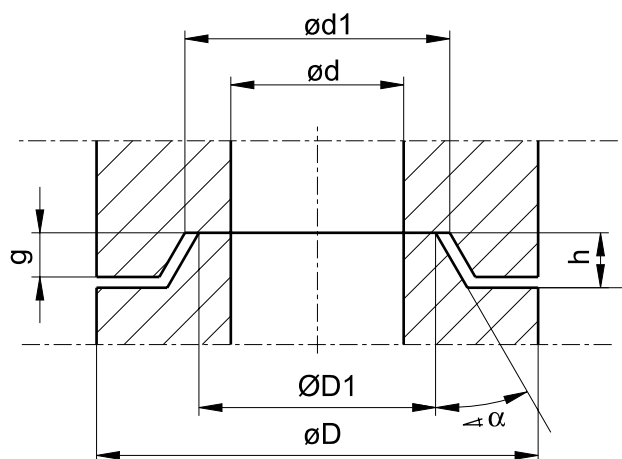


CONTENT • INHALT

GROOVE AND TONGUE • NUT UND FEDER..... 2  
 SPRUE CUP GT, TTR, MTR, TRG • GIESSTRICHTER GT, TTR, MTR, TRG..... 3  
 SPRUE CUP TTR, TRS, TRG • GIESSTRICHTER TTR, TRS, TRG..... 4  
 SPRUE CUP TR, TRS • GIESSTRICHTER TR, TRS..... 5  
 TUBE R • ROHR R ..... 6  
 TUBE NN • ROHR NN ..... 7  
 TUBE FF • ROHR FF ..... 8  
 RING RUNNER ANGLE TUBE RWR • WINKELLAUFROHR RWR..... 9  
 REDUCTION TUBE RK-10, RK-20, RK-30 • ROHRREDUZIERUNGSTÜCK RK-10, RK-20, RK-30..... 10  
 EXPANSION TUBE EXPK • ROHRERWEITERUNGSTÜCK EXPK..... 11  
 ELBOW BER 45° (OUTSIDE SQUARE) • KRÜMMER BER 45° (AUSSEN RECHTECKIG) ..... 12  
 ELBOW BER 90° (OUTSIDE SQUARE) • KRÜMMER BER 90° (AUSSEN RECHTECKIG) ..... 13  
 ELBOW KR 45° (OUTSIDE ROUND) • KRÜMMER KR 45° (AUSSEN RUNDEN) ..... 14  
 ELBOW KR 90° (OUTSIDE ROUND) • KRÜMMER KR 90° (AUSSEN RUNDEN) ..... 15  
 TUBE 45° CUT • ROHR 45° GESCHNITTEN ..... 16  
 L - PIECE • L - STÜCK ..... 17  
 TX - PIECE • TX - STÜCK ..... 18  
 T - PIECE • T - STÜCK..... 19  
 LXT - PIECE • LXT - STÜCK..... 20  
 KING BRICK H4 • KÖNIGSSTEIN H4..... 21  
 INGATE TUBE AS • ANSCHNITTROHR AS ..... 22  
 INGATE PIECE LAS • ANSCHNITTWINKEL LAS..... 23  
 TUBE AMS • ROHR AMS ..... 24  
 DUCK FOOT MA • MESSERANSCHNITTSTEIN MA..... 25  
 DUCK FOOT ELBOW MAB • MESSERANSCHNITTBogen MAB..... 26  
 DUCK FOOT CROSSED MABQ • MESSERANSCHNITTBogen MABQ ..... 27  
 SLAG DOWN GATE TS • SCHLACKENABGANG TS ..... 28  
 SLAG TRAP END TUBE RES • SCHLACKENFANGENDSTÜCK RES ..... 29  
 STOPPER TUBE • STOPFENSTANGENROHR ..... 30  
 POCKET BLOCK • LOCHSTEIN ..... 31  
 NOZZLES • AUSGÜSSE..... 32  
 STOPPERS • STOPFEN ..... 34

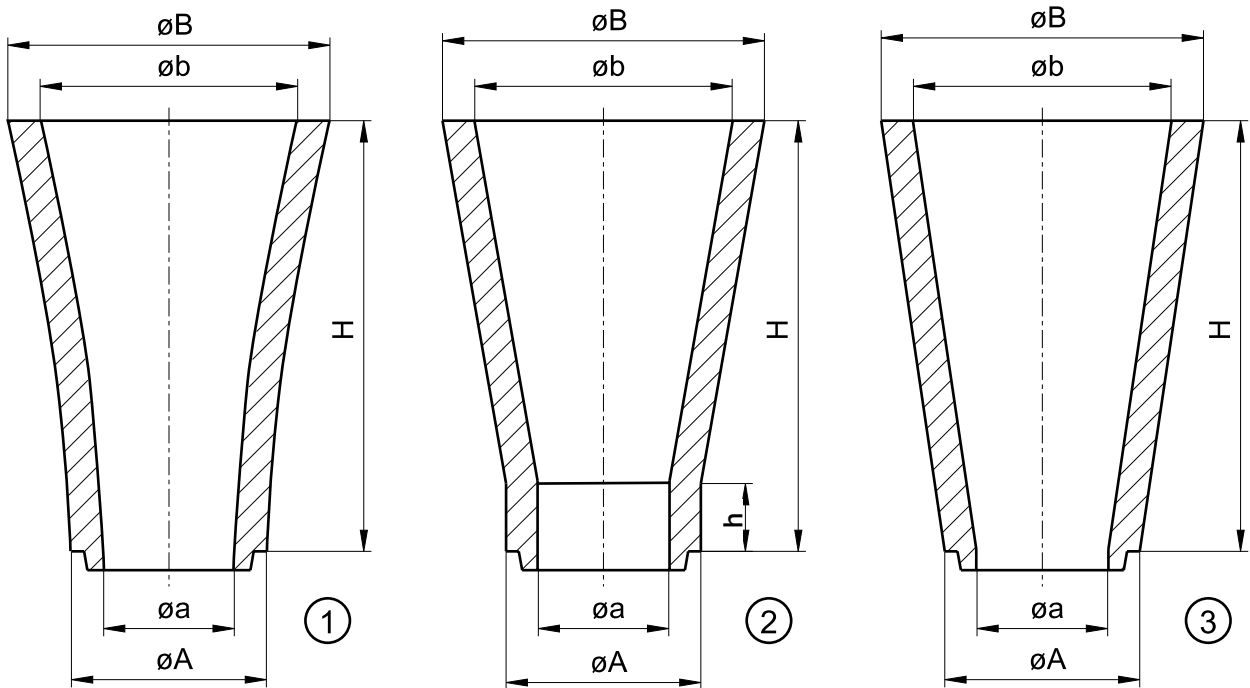
<b>Description:</b>	Fireclay d refractory products with increased resistance against penetration by molten metal.										
<b>Merkmale:</b>	Die Erzeugnisse aus Gießschamotte sind feinkörnige feuerfeste Formsteine mit hoher Beständigkeit gegen Penetration durch das flüssige Metal.										
<b>Use:</b>	The shaped products are designed for casting systems and are replaced after each use.										
<b>Adwendung:</b>	Die Formsteine sind für einmalige Nutzung beim Bau von Eingußsystemen bestimmt.										
<b>Specification:</b>											
<b>Eigenschaften:</b>	<table border="1"> <thead> <tr> <th colspan="2">Reference values • Referenzwerte</th> </tr> </thead> <tbody> <tr> <td>Alumina content (% Al<sub>2</sub>O<sub>3</sub>) • Tonerdegehalt (% Al<sub>2</sub>O<sub>3</sub>)</td> <td>min. 36</td> </tr> <tr> <td>Iron oxide content (% Fe<sub>2</sub>O<sub>3</sub>) • Eisenoxidgehalt (% Fe<sub>2</sub>O<sub>3</sub>)</td> <td>2,5</td> </tr> <tr> <td>Bulk density (g/cm<sup>3</sup>) • Rohdichte (g/cm<sup>3</sup>)</td> <td>2,05</td> </tr> <tr> <td>Open porosity (%) • Offene Porosität (%)</td> <td>max. 21</td> </tr> </tbody> </table>	Reference values • Referenzwerte		Alumina content (% Al <sub>2</sub> O <sub>3</sub> ) • Tonerdegehalt (% Al <sub>2</sub> O <sub>3</sub> )	min. 36	Iron oxide content (% Fe <sub>2</sub> O <sub>3</sub> ) • Eisenoxidgehalt (% Fe <sub>2</sub> O <sub>3</sub> )	2,5	Bulk density (g/cm <sup>3</sup> ) • Rohdichte (g/cm <sup>3</sup> )	2,05	Open porosity (%) • Offene Porosität (%)	max. 21
Reference values • Referenzwerte											
Alumina content (% Al <sub>2</sub> O <sub>3</sub> ) • Tonerdegehalt (% Al <sub>2</sub> O <sub>3</sub> )	min. 36										
Iron oxide content (% Fe <sub>2</sub> O <sub>3</sub> ) • Eisenoxidgehalt (% Fe <sub>2</sub> O <sub>3</sub> )	2,5										
Bulk density (g/cm <sup>3</sup> ) • Rohdichte (g/cm <sup>3</sup> )	2,05										
Open porosity (%) • Offene Porosität (%)	max. 21										
	Detailed specifications are given in our data sheets. Zu detaillierte Eigenschaften finden Sie in den Datenblättern.										
<b>Permitted quality variations:</b>	Detailed tolerances are given in our data sheets.										
<b>Qualitätsparameter:</b>	Zu detaillierte qualitätsparameter finden Sie in den Datenblättern.										
<b>Packaging:</b>	The products are supplied on pallets, secured with metal straps and shrink/wrapped.										
<b>Verpackung:</b>	Die Ware wird, mit Band befestigt und mit Schrumpffolie versehen, auf Paletten verpackt.										
<b>Storing:</b>	The products should be stored in enclosed warehouses.										
<b>Lagerung:</b>	Die Ware muss in überdachten Lagern gelagert werden.										

## GROOVE AND TONGUE NUT UND FEDER



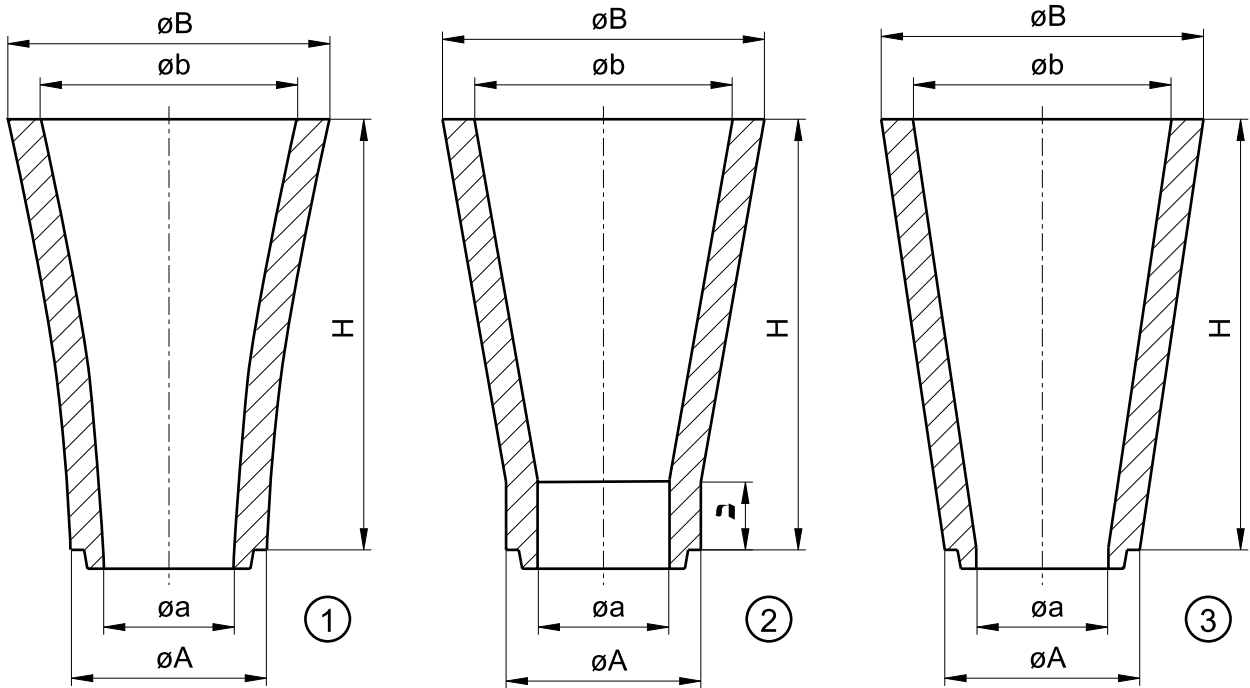
number	d (mm)	d1 (mm)	D (mm)	D1 (mm)	h (mm)	g (mm)	$\alpha$ (°)
7212	30	42	55	39	9	8	10°37'
7213	40	51	70	49	9	8	10°37'
7825	50	61	74	58	9	8	10°37'
7214	60	75	90	72	9	8	10°37'
8089	70	86	100	83	9	8	10°37'
7215	80	99	115	96	11	10	11°20'
7577	100	120	140	116	11	10	11°20'
7578	120	141	165	136	11	10	11°20'
7723	140	160	180	156	11	10	11°20'
7724	150	175	200	172	7	7	11°20'

# SPRUE CUP GT, TTR, MTR, TRG GIESSTRICHTER GT, TTR, MTR, TRG



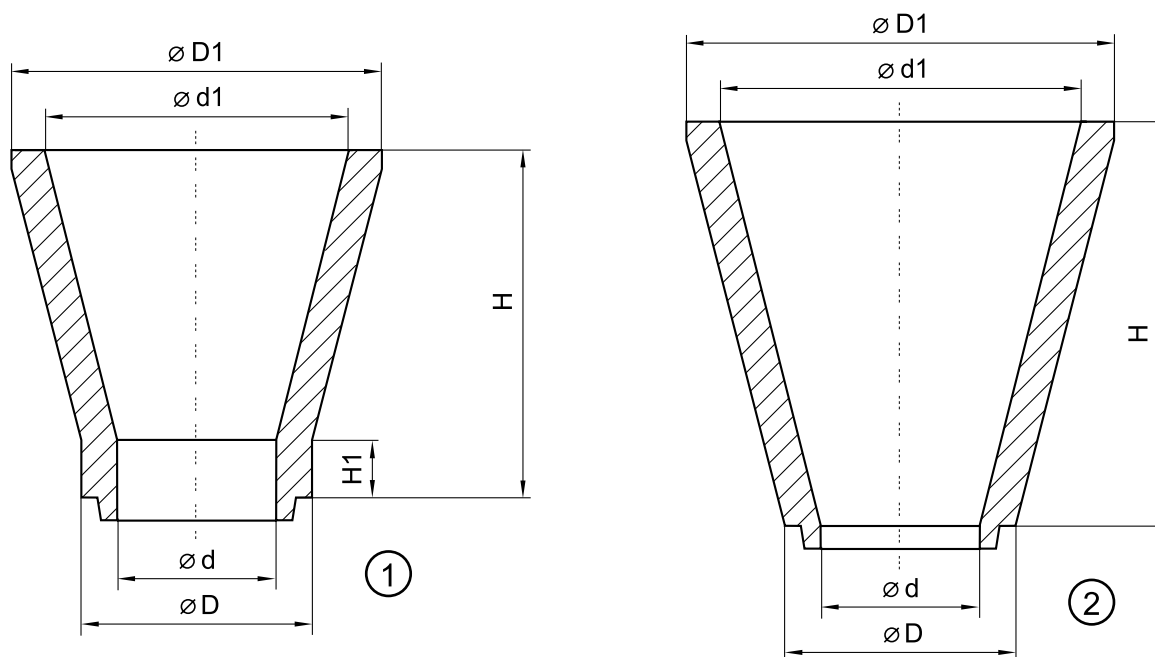
number	type	model	a (mm)	A (mm)	b (mm)	B (mm)	h (mm)	H (mm)	weight gewicht (kg)	pcs/pal. stck/pal.
7213	TRG 200	3	40	70	80	110		200	1,20	300
7213	GT 150	1	40	70	120	148		150	0,95	560
7213	TTR 200	2	40	70	130	160	30	200	2,00	300
7213	TTR 250	2	40	70	130	160	80	250	2,00	300
7213	MTR 295	2	40	70	92	116	185	295	1,90	300
7213	TTR 300	2	40	70	130	160	130	300	2,25	300
7825	MTR 150	2	50	74	110	134	30	150	1,00	569
7825	MTR 200	2	50	74	110	134	80	200	1,40	385
7825	MTR 250	2	50	74	110	134	130	250	1,65	308
7825	MTR 295	2	50	74	110	134	175	295	1,70	308
7825	GT 250	1	50	74	130	152		250	1,50	216
7825	TTR 200	2	50	74	140	166	30	200	1,60	240
7825	TTR 250	2	50	74	140	166	80	250	1,80	270
7825	TTR 300	2	50	74	140	166	130	300	2,10	216
7214	TRG 200	3	60	90	120	150		200	1,90	200
7214	GT 250	1	60	90	150	175		250	2,30	200
7214	TTR 200	2	60	90	150	180	30	200	2,30	200
7214	TTR 250	2	60	90	150	180	80	250	2,45	160
7214	TTR 300	2	60	90	150	180	130	300	2,75	140

# SPRUE CUP TTR, TRS, TRG GIESSTRICHTER TTR, TRS, TRG



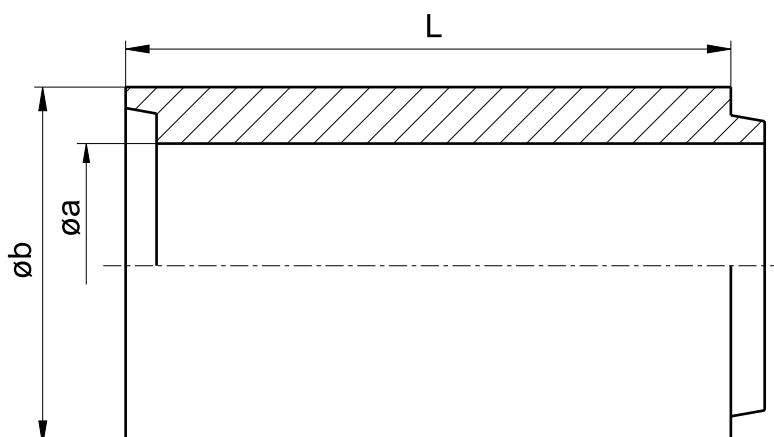
number	type	model	a (mm)	A (mm)	b (mm)	B (mm)	h (mm)	H (mm)	weight gewicht (kg)	pcs/pal. stck/pal.
8089	TTR 200	2	70	100	160	190	30	200	2,40	175
7215	TRG 200	3	80	115	160	190	-	200	2,70	140
7215	TTR 200	2	80	115	170	200	30	200	2,70	140
7215	TTR 250	2	80	115	170	200	80	250	2,70	120
7215	TTR 300	2	80	115	170	200	130	300	4,20	96
7577	TTR 200	2	100	140	190	230	30	200	4,40	120
7577	TTR 250	2	100	140	190	230	80	250	5,10	120
7577	TTR 300	2	100	140	190	230	130	300	5,60	80
7578	TTR 200	2	120	160	210	250	30	200	5,00	75
7578	TTR 250	2	120	160	210	250	80	250	5,40	60
7578	TTR 300	2	120	160	210	250	130	300	6,40	60
7723	TRG 280	2	140	180	260	301	30	280	7,80	36
7723	TTR 200	2	140	180	231	272	30	200	5,10	75
7723	TRS 200	3	140	180	305	350	-	200	8,10	40

# SPRUE CUP TR, TRS GIESSTRICHTER TR, TRS



number	type	model	d (mm)	d1 (mm)	D (mm)	D1 (mm)	H (mm)	H1 (mm)	weight gewicht (kg)	pcs/pal. stck/pal.
7214	TR 200	1	60	180	90	210	220	20	2,90	140
7215	TR 250	1	80	225	116	265	280	30	6,00	60
7577	TR 250	1	100	225	140	265	280	30	6,50	45
7577	TRS 300	2	100	300	150	350	300	-	11,30	27
7578	TRS 200	2	120	305	160	350	200	-	8,10	40
7578	TRS 280	2	120	240	160	280	280	-	7,30	45
7578	TRS 300	2	120	280	160	316	220	-	6,00	48
7723	TRS 200	2	140	305	180	350	200	-	8,10	40
7724	TRS 350	2	150	300	200	350	350	-	13,60	16

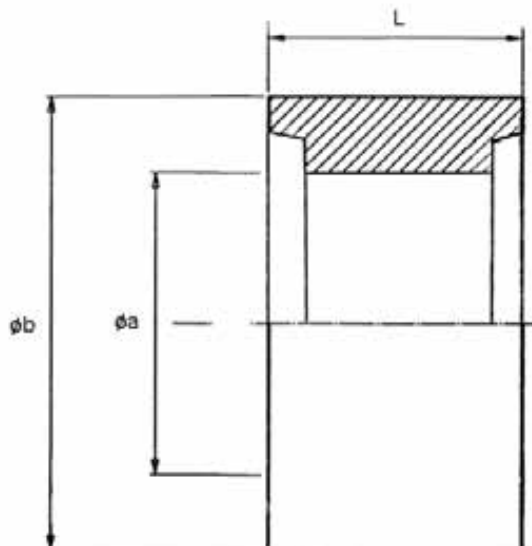
## TUBE R ROHR R



number	type	a (mm)	b (mm)	L (mm)	weight gewicht (kg)	pcs/pal. stck/pal.
7212	50	30	55	50	0,25	1344
7212	100	30	55	100	0,45	1120
7212	150	30	55	150	0,70	1008
7212	200	30	55	200	0,90	672
7212	250	30	55	250	1,15	504
7212	300	30	55	300	1,15	448
7213	50	40	55	50	1,35	1344
7213	100	40	70	100	0,25	672
7213	150	40	70	150	0,55	672
7213	200	40	70	200	0,80	672
7213	250	40	70	250	1,05	504
7213	300	40	70	300	1,20	504
7825	50	50	74	50	1,50	1152
7825	100	50	74	100	0,30	1152
7825	150	50	74	150	0,50	864
7825	200	50	74	200	0,75	720
7825	250	50	74	250	1,00	432
7825	300	50	74	300	1,25	432
7214	50	60	90	50	0,35	1664
7214	100	60	90	100	0,70	832
7214	150	60	90	150	1,10	624
7214	200	60	90	200	1,40	520
7214	250	60	90	250	1,75	312
7214	300	60	90	300	2,15	312
8089	50	70	100	50	0,45	1344
8089	100	70	100	100	0,80	672
8089	150	70	100	150	1,20	504
8089	200	70	100	200	1,60	420
8089	250	70	100	250	2,00	336
8089	300	70	100	300	2,55	252

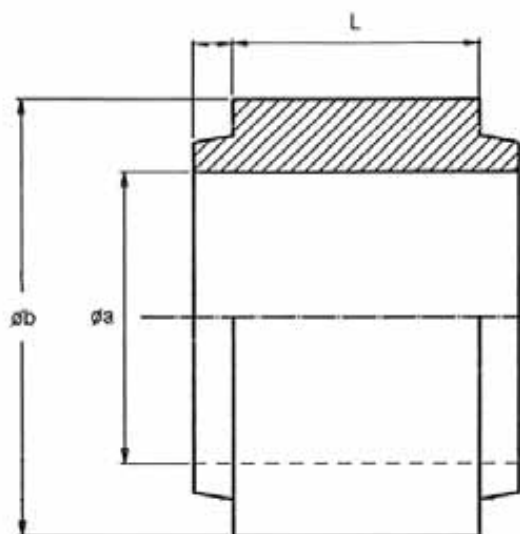
number	type	a (mm)	b (mm)	L (mm)	weight gewicht (kg)	pcs/pal. stck/pal.
7215	50	80	115	50	0,55	1260
7215	100	80	115	100	1,10	630
7215	150	80	115	150	1,60	504
7215	200	80	115	200	2,15	378
7215	250	80	115	250	2,70	252
7215	300	80	115	300	3,30	252
7577	50	100	140	50	0,80	800
7577	100	100	140	100	1,50	400
7577	150	100	140	150	2,20	240
7577	200	100	140	200	2,90	240
7577	250	100	140	250	3,60	180
7577	300	100	140	300	4,30	160
7578	50	120	165	50	1,00	700
7578	100	120	165	100	1,90	300
7578	150	120	165	150	2,90	210
7578	200	120	165	200	3,90	180
7578	250	120	165	250	4,90	120
7578	300	120	165	300	6,00	120
7723	50	140	180	50	1,05	560
7723	100	140	180	100	2,10	280
7723	150	140	180	150	3,20	224
7723	200	140	180	200	4,00	144
7723	250	140	180	250	5,10	120
7723	300	140	180	300	6,40	96
7724	50	150	200	50	1,40	384
7724	100	150	200	100	2,70	192
7724	150	150	200	150	4,20	168
7724	200	150	200	200	5,50	96
7724	250	150	200	250	6,90	80
7724	300	150	200	300	8,30	60

# TUBE NN ROHR NN



number	type	a (mm)	b (mm)	L (mm)	weight gewicht (kg)	pcs/pal. stck/pal.
7212	30NN	30	60	30	0,15	2016
7212	50NN	30	60	50	0,25	2016
7213	30NN	40	70	30	0,15	1344
7213	50NN	40	70	50	0,25	1344
7825	30NN	50	74	30	0,18	2304
7825	50NN	50	74	50	0,3	2304
7214	30NN	60	90	30	0,21	1664
7214	50NN	60	90	50	0,35	1664
8089	30NN	70	100	30	0,27	1344
8089	50NN	70	100	50	0,45	1344
7215	30NN	80	115	30	0,33	1260
7215	50NN	80	115	50	0,55	1260
7577	50NN	100	140	50	0,8	800
7577	100NN	100	140	100	1,5	400
7578	50NN	120	165	50	1	700
7578	100NN	120	165	100	1,9	300
7723	50NN	140	180	50	1,05	560
7723	100NN	140	180	100	2,1	280
7724	50NN	150	200	50	1,35	384
7724	100NN	150	200	100	2,7	192

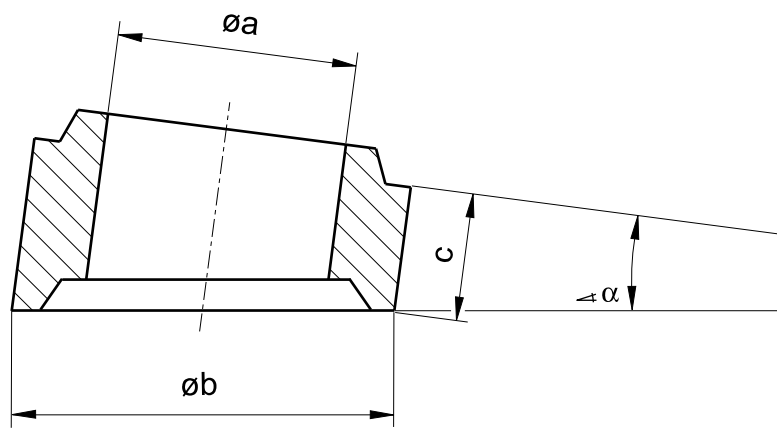
# TUBE FF ROHR FF



a	b	L	weight	pcs/pal.
---	---	---	--------	----------

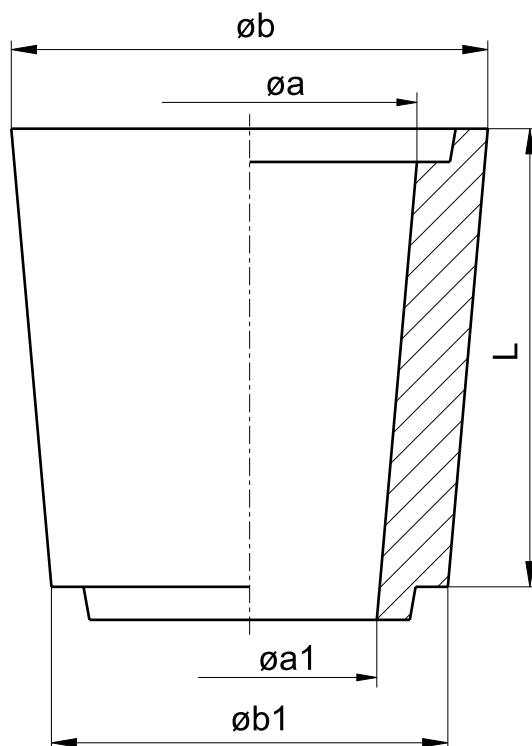
number	type	a (mm)	b (mm)	L (mm)	weight gewicht (kg)	pcs/pal. stck/pal.
7212	30FF	30	60	30	0,15	2016
7212	50FF	30	60	50	0,25	2016
7213	30FF	40	70	30	0,15	1344
7213	50FF	40	70	50	0,25	1344
7825	30FF	50	74	30	0,18	2304
7825	50FF	50	74	50	0,3	2304
7214	30FF	60	90	30	0,21	1664
7214	50FF	60	90	50	0,35	1664
8089	30FF	70	100	30	0,27	1344
8089	50FF	70	100	50	0,45	1344
7215	30FF	80	115	30	0,33	1260
7215	50FF	80	115	50	0,55	1260
7577	50FF	100	140	50	0,8	800
7577	100FF	100	140	100	1,5	400
7578	50FF	120	165	50	1	700
7578	100FF	120	165	100	1,9	300
7723	50FF	140	180	50	1,05	560
7723	100FF	140	180	100	2,1	280
7724	50FF	150	200	50	1,35	384
7724	100FF	150	200	100	2,7	192

## RING RUNNER ANGLE TUBE RWR WINKELLAUFROHR RWR



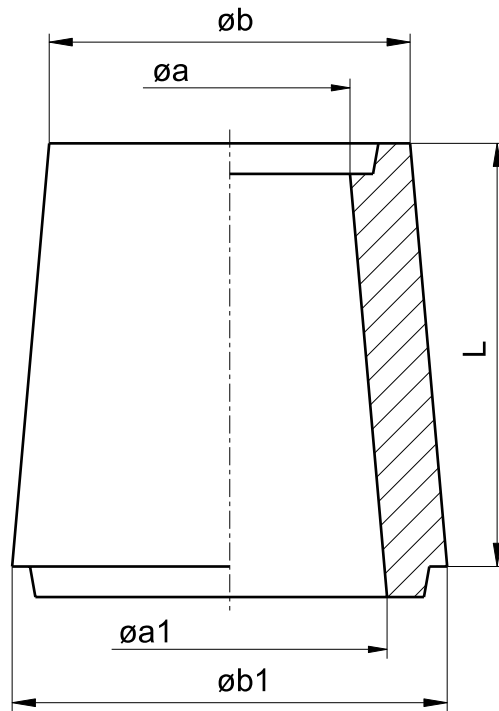
number	type	a (mm)	b (mm)	L (mm)	α (°)	weight gewicht (kg)	pcs/pal. stck/pal.
7214	RWR 7,5°	60	90	30	7,5	0,25	-
7215	RWR 7,5°	80	115	30	7,5	0,40	-
7577	RWR 7,5°	100	140	30	7,5	0,60	578
7578	RWR 7,5°	120	165	30	7,5	0,60	420
7577	RWR 15°	100	146	30	15	0,74	576
7578	RWR 15°	120	165	30	15	0,95	420
7723	RWR 7,5°	140	180	100	7,5	2,60	224
7723	RWR 15°	140	180	100	15	2,30	224
8089	RWR 7,5°	70	100	30	7,5	0,30	832

## REDUCTION TUBE RK-10, RK-20, RK-30 ROHRREDUZIERUNGSSTÜCK RK-10, RK-20, RK-30



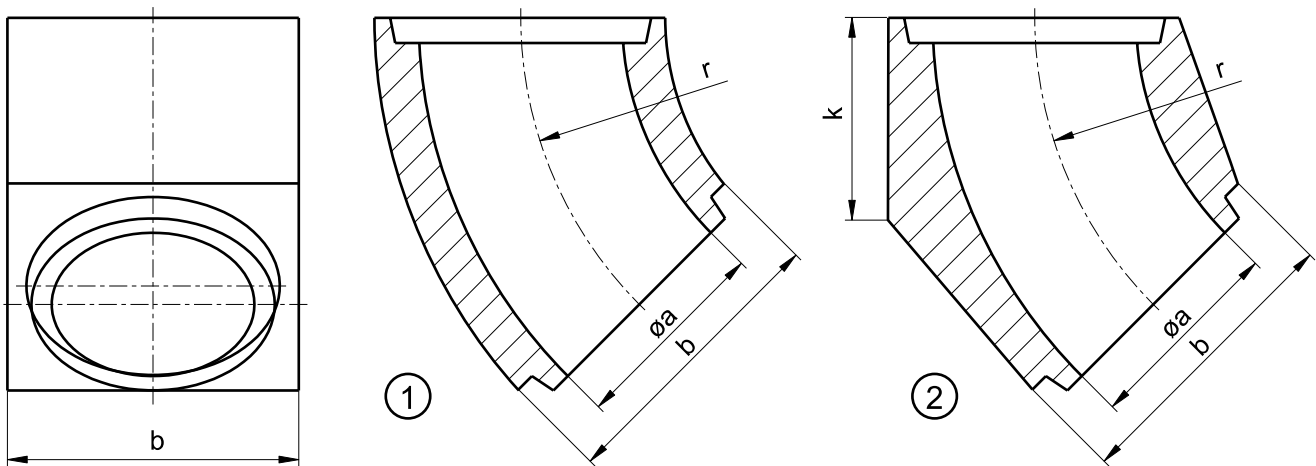
number	type	a (mm)	a1 (mm)	b (mm)	b1 (mm)	L (mm)	weight gewicht (kg)	pcs/pal. stck/pal.
7213	RK 10	40	30	70	60	100	0,48	864
7825	RK 10	50	40	74	70	100	0,50	880
7825	RK 20	50	30	74	60	100	0,50	880
7214	RK 10	60	50	90	74	100	0,65	1188
7214	RK 20	60	40	90	70	100	0,65	1188
8089	RK 10	70	60	100	90	100	0,90	864
8089	RK 20	70	50	100	74	100	0,67	864
7215	RK 10	80	70	115	100	100	0,60	630
7215	RK 20	80	60	115	90	100	0,85	630
7577	RK 20	100	80	140	115	100	1,25	432
7578	RK 20	120	100	160	140	100	1,50	350
7723	RK 20	140	120	180	160	200	3,90	120
7724	RK 30	150	120	200	160	100	2,40	144

**EXPANSION TUBE EXPK**  
**ROHRERWEITERUNGSTÜCK EXPK**



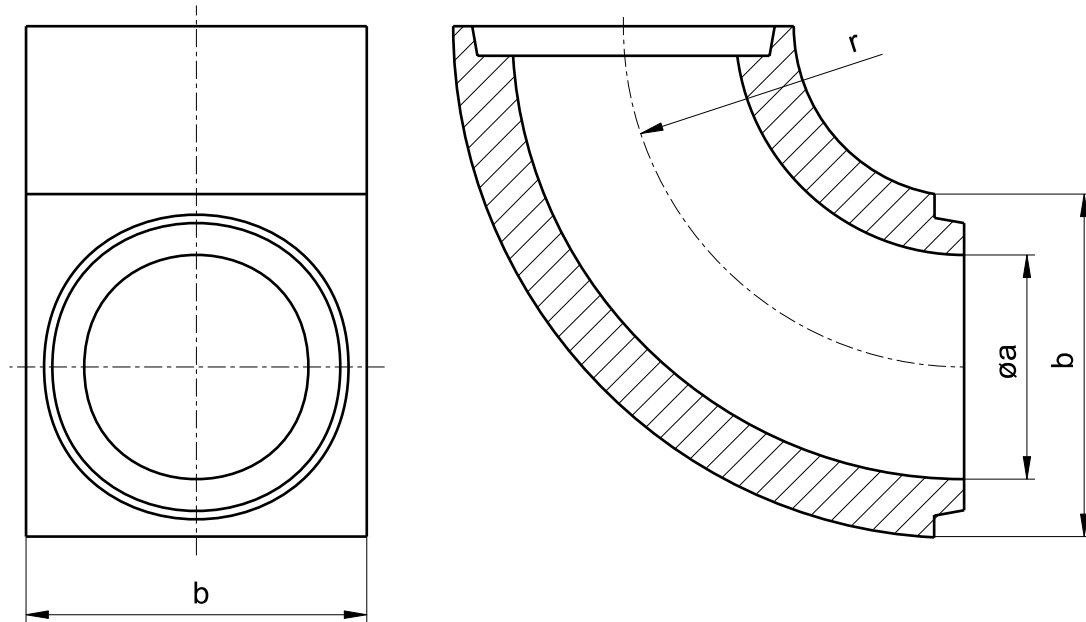
number	type	a (mm)	a1 (mm)	b (mm)	b1 (mm)	L (mm)	weight gewicht (kg)	pcs/pal. stck/pal.
7213	EXPK 20	40	60	70	90	100	0,62	1170
7825	EXPK 20	50	70	74	100	100	0,70	864
7214	EXPK 20	60	80	90	115	100	1,10	630
8089	EXPK 10	70	80	100	115	100	1,20	630
7215	EXPK 20	80	100	115	140	100	1,40	432
7577	EXPK 20	100	120	140	160	100	1,70	320
7578	EXPK 20	120	140	160	180	200	3,72	120

## ELBOW BER 45° (OUTSIDE SQUARE) KRÜMMER BER 45° (AUSSEN RECHTECKIG)



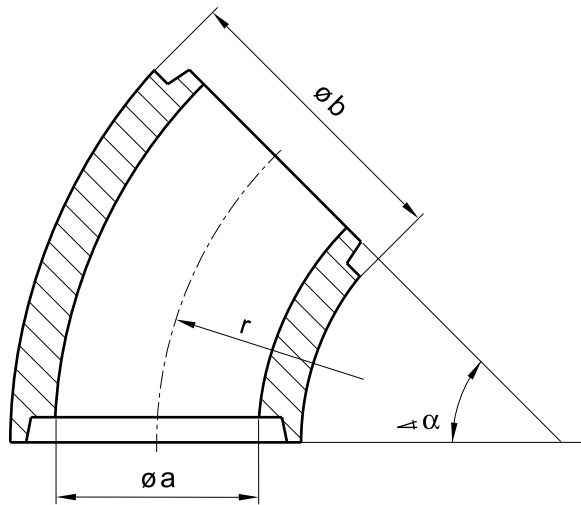
number	type	model	a (mm)	b (mm)	r (mm)	weight gewicht (kg)	pcs/pal. stck/pal.
7212	BER 45°	1	30	60	60	0,40	-
7213	BER 45°	1	40	70	80	0,55	1040
7825	BER 45°	1	50	74	100	0,70	1260
7214	BER 45°	1	60	90	120	1,10	880
8089	BER 45°	1	70	100	140	1,50	540
7215	BER 45°	1	80	115	160	2,15	480
7577	BER 45°	2	100	140	200	4,50	192
7578	BER 45°	1	120	160	240	5,40	140
7723	BER 45°	1	140	180	280	10,50	108
7724	BER 45°	1	150	200	296	11,50	60

**ELBOW BER 90° (OUTSIDE SQUARE)**  
**KRÜMMER BER 90° (AUSSEN RECHTECKIG)**



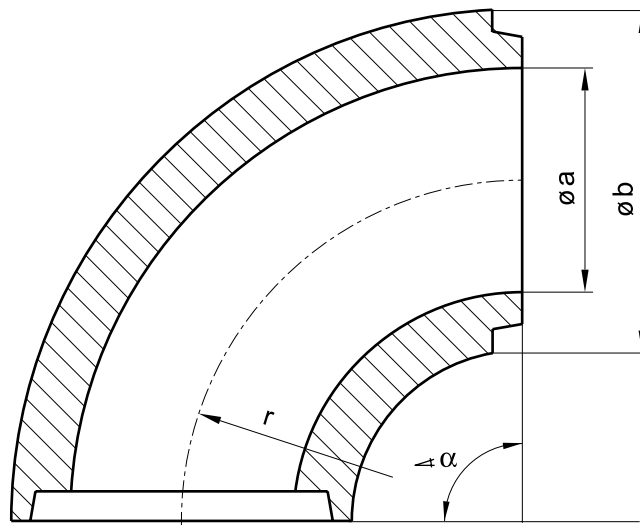
number	type	a (mm)	b (mm)	r (mm)	weight gewicht (kg)	pcs/pal. stck/pal.
7212	BER 90°	30	60	60	0,55	-
7213	BER 90°	40	70	80	0,90	840
7825	BER 90°	50	74	100	1,20	600
7214	BER 90°	60	90	120	2,15	504
8089	BER 90°	70	100	140	2,70	270
7215	BER 90°	80	115	160	4,20	240
7577	BER 90°	use two bricks of BER 45°				60
7578	BER 90°	use two bricks of BER 45°				48
7723	BER 90°	use two bricks of BER 45°				-
7724	BER 90°	use two bricks of BER 45°				-

**ELBOW KR 45° (OUTSIDE ROUND)  
KRÜMMER KR 45° (AUSSEN RUNDEN)**



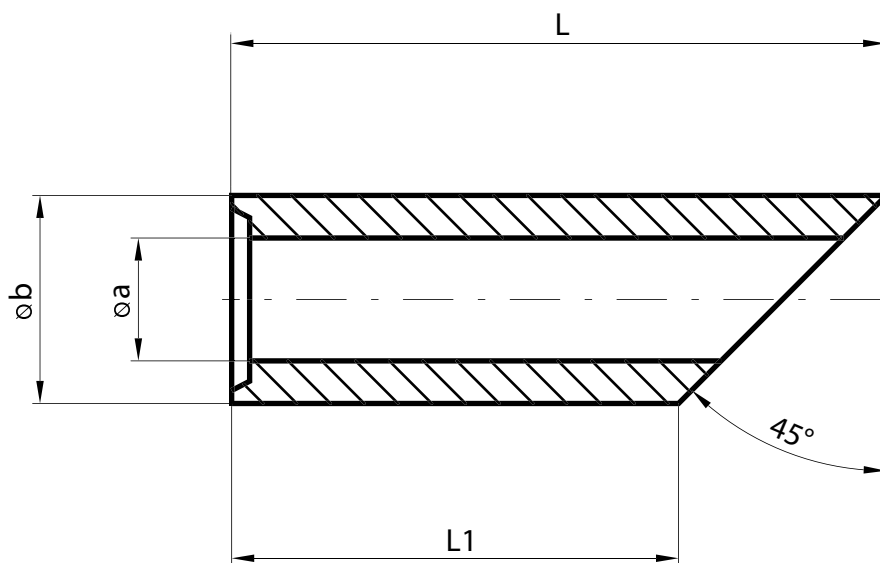
type	$\alpha$ (°)	a (mm)	b (mm)	r (mm)	weight gewicht (kg)	pcs/pal. stck/pal.
KR 40	45	40	64	80	0,30	-
KR 50	45	50	75	150	0,50	-
KR 60	45	60	90	130	0,80	210
KR 70	45	70	100	130	0,90	280
KR 80	45	80	115	160	1,70	144
KR 100	45	100	140	200	2,53	140
KR 120	45	120	160	250	3,50	96

**ELBOW KR 90° (OUTSIDE ROUND)**  
**KRÜMMER KR 90° (AUSSEN RUNDEN)**



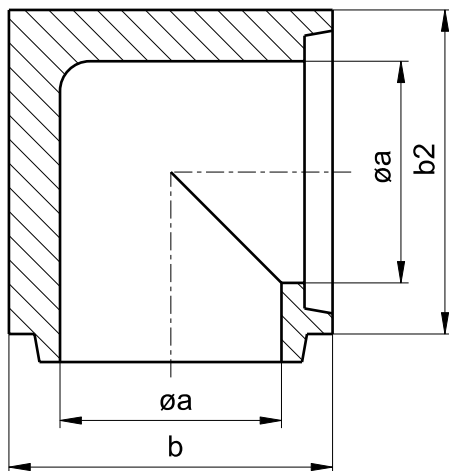
type	$\alpha$ (°)	a (mm)	b (mm)	r (mm)	weight gewicht (kg)	pcs/pal. stck/pal.
KR 30	90	30	50	75	0,30	440
KR 40	90	40	64	80	0,60	480
KR 50	90	50	75	150	1,10	240
KR 60	90	60	90	130	1,50	210
KR 70	90	70	100	130	1,80	216
KR 80	90	80	115	160	3,30	126
KR 100	90	100	140	200	5,70	56
KR 120	90	120	160	250	7,00	48

**TUBE 45° CUT**  
**ROHR 45° GESCHNITTEN**



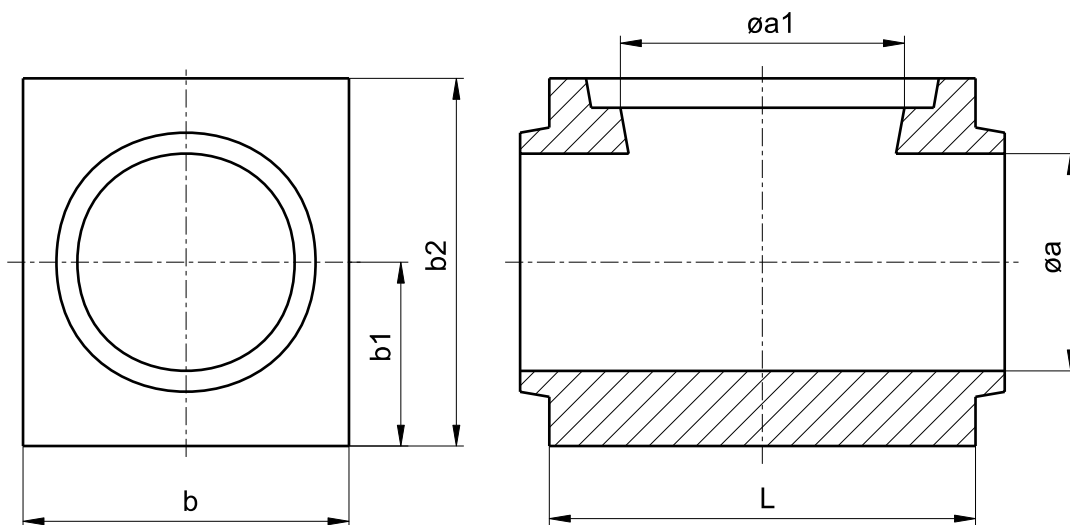
number	type	a (mm)	b (mm)	L (mm)	L1 (mm)	weight gewicht (kg)	pcs/pal. stck/pal.
7215	C45	80	115	185	80	1,50	-
7577	C45	100	140	210	80	2,50	-
7578	C45	120	165	235	80	3,00	-

**L - PIECE**  
**L - STÜCK**



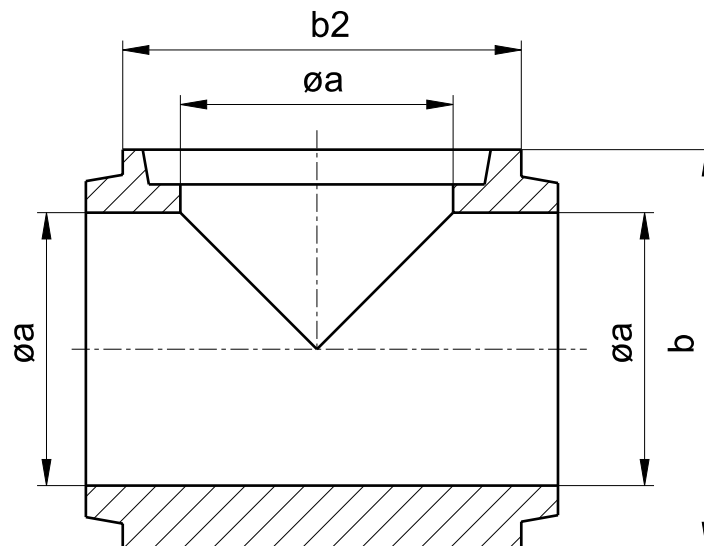
number	type	a (mm)	b (mm)	b2 (mm)	weight gewicht (kg)	pcs/pal. stck/pal.
7212	L	30	60	53	0,35	1530
7213	L	40	70	71,5	0,55	810
7825	L	50	74	75,5	0,60	1386
7214	L	60	90	92,5	1,10	1001
7214	L/100	60	90	100	1,20	500
8089	L	70	100	101,5	1,35	693
7215	L	80	115	117,5	2,00	540
7215	L/133	80	115	133	2,70	270
7577	L	100	140	142,5	3,65	240
7577	L/150	100	140	150	3,90	240
7578	L	120	160	162,5	5,10	180
7578	L/170	120	160	170	5,40	180
7723	L	140	180	182,5	6,60	60
7724	L	150	221	226	13,40	60

**TX - PIECE**  
**TX - STÜCK**



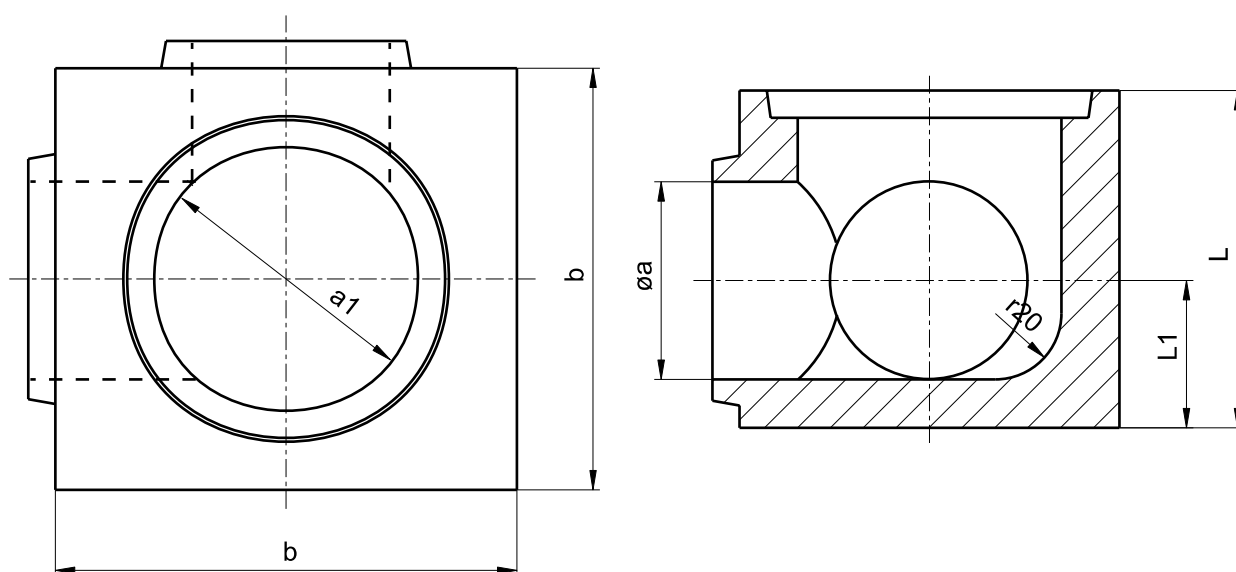
number	type	a (mm)	a1 (mm)	b (mm)	b1 (mm)	b2 (mm)	L (mm)	weight gewicht (kg)	pcs/pal. stck/pal.
7213	TX 10	40	50	74	37	74	77	0,62	1200
7825	TX 20	50	70	100	37	87	105	1,20	720
7214	TX 20	60	80	115	45	102,5	119	1,70	528
8089	TX 10	70	80	115	50	107,5	120	1,90	450
7215	TX 20	80	100	140	57,5	127,5	145	3,40	240
7577	TX 20	100	120	160	70	150	165	5,00	180
7578	TX 20	120	140	180	80	170	185	6,25	80

**T - PIECE**  
**T - STÜCK**



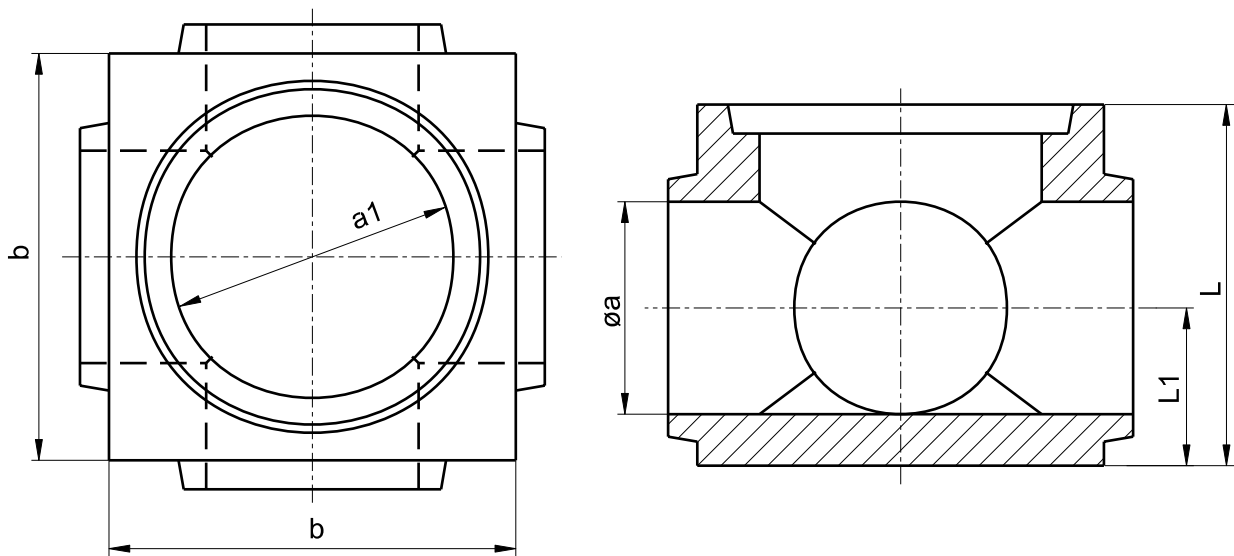
number	type	a (mm)	b (mm)	b2 (mm)	weight gewicht (kg)	pcs/pal. stck/pal.
7212	T	30	60	62	0,40	1530
7213	T	40	70	73	0,50	960
7825	T	50	74	77	0,70	1344
7214	T	60	90	95	1,00	910
7214	T/130	60	90	130	1,00	560
8089	T	70	100	103	1,40	693
7215	T	80	115	120	1,85	450
7215	T/160	80	115	160	2,55	270
7577	T	100	140	145	3,20	240
7577	T/160	100	140	160	3,20	240
7578	T	120	160	165	4,50	180
7578	T/180	120	160	180	4,60	120
7723	T	140	180	185	5,30	60
7724	T	150	221	226	11,00	60

**LXT - PIECE**  
**LXT - STÜCK**



number	type	a1 (mm)	b (mm)	a (mm)	L (mm)	L1 (mm)	weight gewicht (kg)	pcs/pal. stck/pal.
7214	LXT	80	115	60	100	45	1,60	216
7215	LXT	100	140	80	125	57,5	2,80	210
7577	LXT	120	160	100	145	70	4,00	196

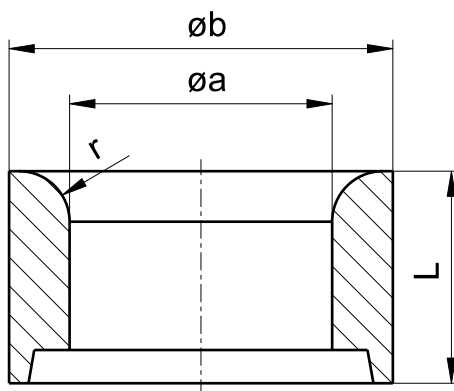
# KING BRICK H4 KÖNIGSSTEIN H4



number	type	a1 (mm)	b (mm)	a (mm)	L (mm)	L1 (mm)	weight gewicht (kg)	pcs/pal. stck/pal.
7213	H4	60	90	40	80	35	0,90	756
7214	H4	80	115	60	102,5	45	1,66	320
7215	H4	100	140	80	125	57,5	2,35	210
7577	H4	120	160	100	145	70	4,60	140
8089	H4/100	100	140	70	123	50	2,70	240
7825	H4/70	70	100	50	85	37	0,90	540

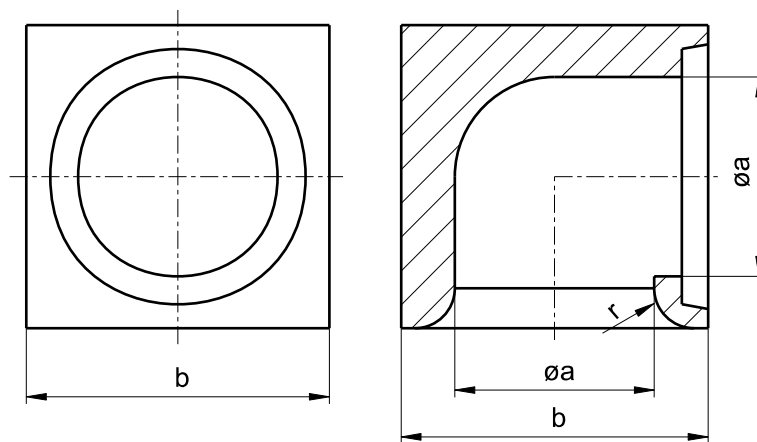
all H2 and H3 available  
alles H2 und H3 erreichbar

## INGATE TUBE AS ANSCHNITTROHR AS



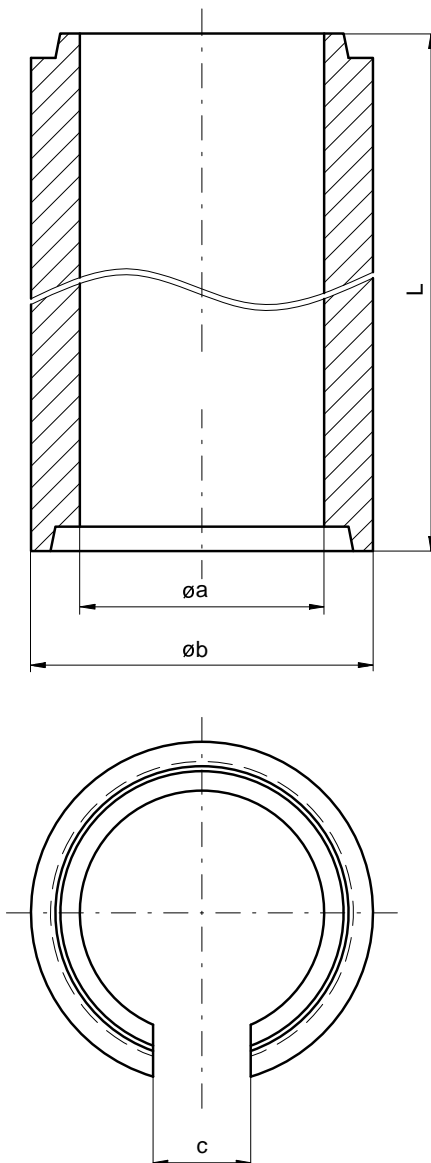
number	type	a (mm)	b (mm)	L (mm)	r (mm)	weight gewicht (kg)	pcs/pal. stck/pal.
7212	AS 50	30	60	50	12	0,22	2016
7213	AS 30	40	70	30	12	0,20	1344
7213	AS 50	40	70	50	12	0,25	1344
7825	AS 30	50	74	30	9	0,15	2304
7825	AS 50	50	74	50	9	0,20	2304
7214	AS 30	60	90	30	12	0,20	1664
7214	AS 50	60	90	50	12	0,35	1664
8089	AS 30	70	100	30	12	0,25	1344
8089	AS 50	70	100	50	12	0,45	1344
7215	AS 30	80	115	30	12	0,27	1260
7215	AS 50	80	115	50	12	0,40	1260
7577	AS 50	100	140	50	12	0,75	450
7577	AS 100	100	140	100	12	1,42	450
7578	AS 100	120	160	100	17	1,66	350
7723	AS 100	140	180	100	17	1,95	280

## INGATE PIECE LAS ANSCHNITTWINKEL LAS



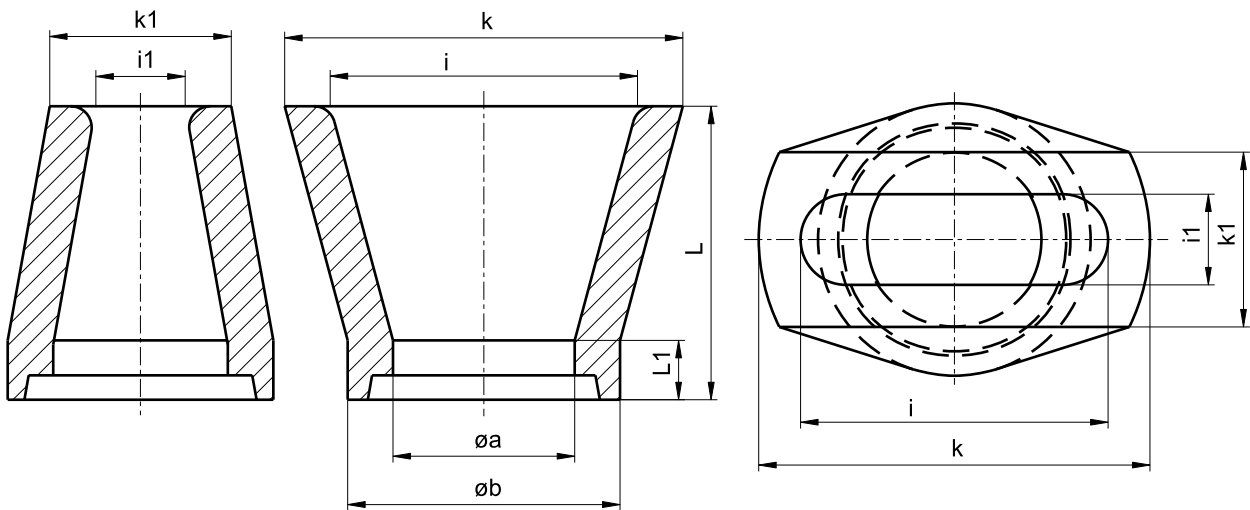
number	type	a (mm)	b (mm)	r (mm)	weight gewicht (kg)	pcs/pal. stck/pal.
7213	LAS	40	70	12	0,50	990
7825	LAS	50	74	9	0,65	-
7214	LAS	60	90	12	1,05	1040
8089	LAS	70	100	12	1,30	-
7215	LAS	80	115	12	1,70	-
7577	LAS	100	140	17	3,80	-
7578	LAS	120	160	17	5,20	-
7723	LAS	140	180	17	6,60	-

# TUBE AMS ROHR AMS



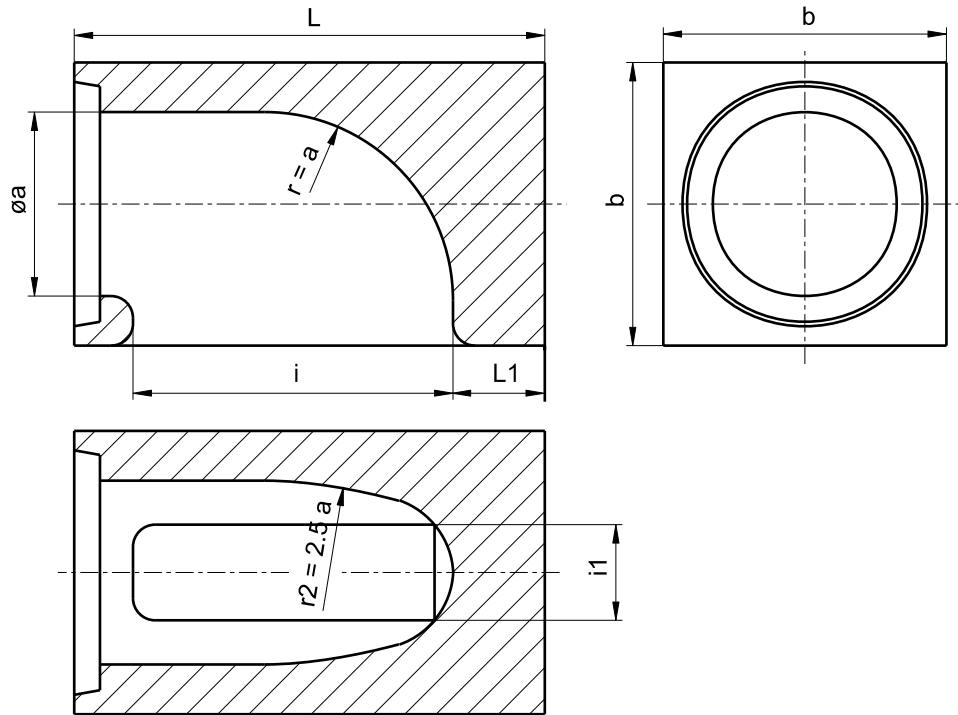
number	type	a (mm)	b (mm)	L (mm)	c (mm)	weight gewicht (kg)	pcs/pal. stck/pal.
7214	AMS	60	90	200	30	1,30	520
7214	AMS	60	90	300	30	2,00	312
7215	AMS	80	115	200	30	2,00	378
7215	AMS	80	115	300	30	3,00	252
7577	AMS	100	140	200	40	2,70	240
7577	AMS	100	140	300	40	4,05	160

## DUCK FOOT MA MESSERANSCHNITTSTEIN MA



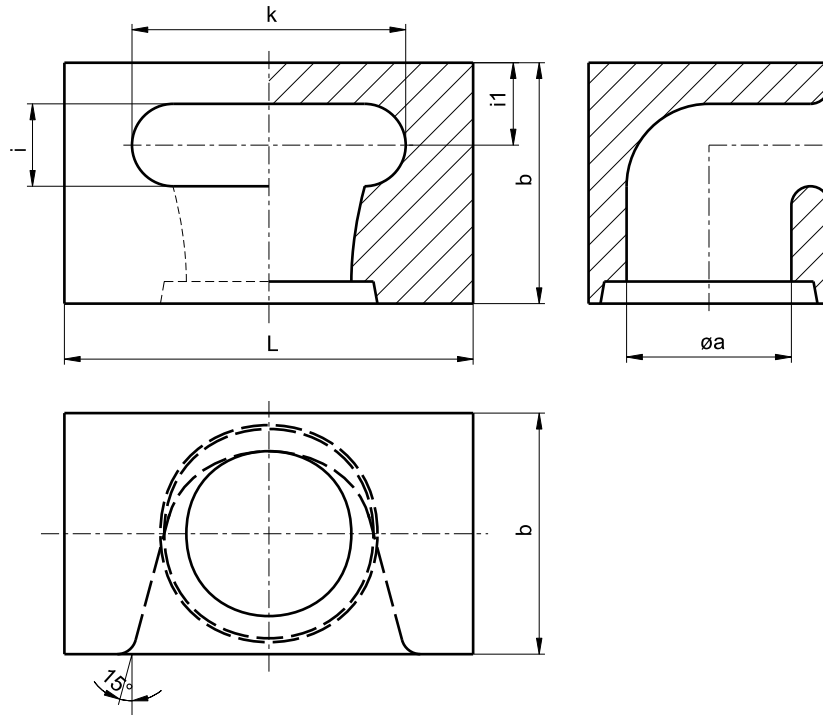
number	type	a (mm)	b (mm)	i (mm)	i1 (mm)	L (mm)	L1 (mm)	k (mm)	k1 (mm)	weight gewicht (kg)	pcs/pal. stck/pal.
7213	MA	40	70	68	20	100	12	90	50	0,56	1224
7825	MA	50	74	85	25	100	12	109	49	0,60	1152
7214	MA	60	90	102	30	100	20	132	60	1,00	720
8089	MA	70	100	120	35	100	12	150	65	1,00	792
7215	MA	80	115	136	40	100	20	166	70	1,50	588
7577	MA	100	140	170	50	100	15	210	90	1,80	360
7578	MA	120	160	205	60	100	20	245	100	2,90	300
7723	MA	140	180	266	95	125	20	320	149	4,80	-

## DUCK FOOT ELBOW MAB MESSERANSCHNITTBOGEN MAB



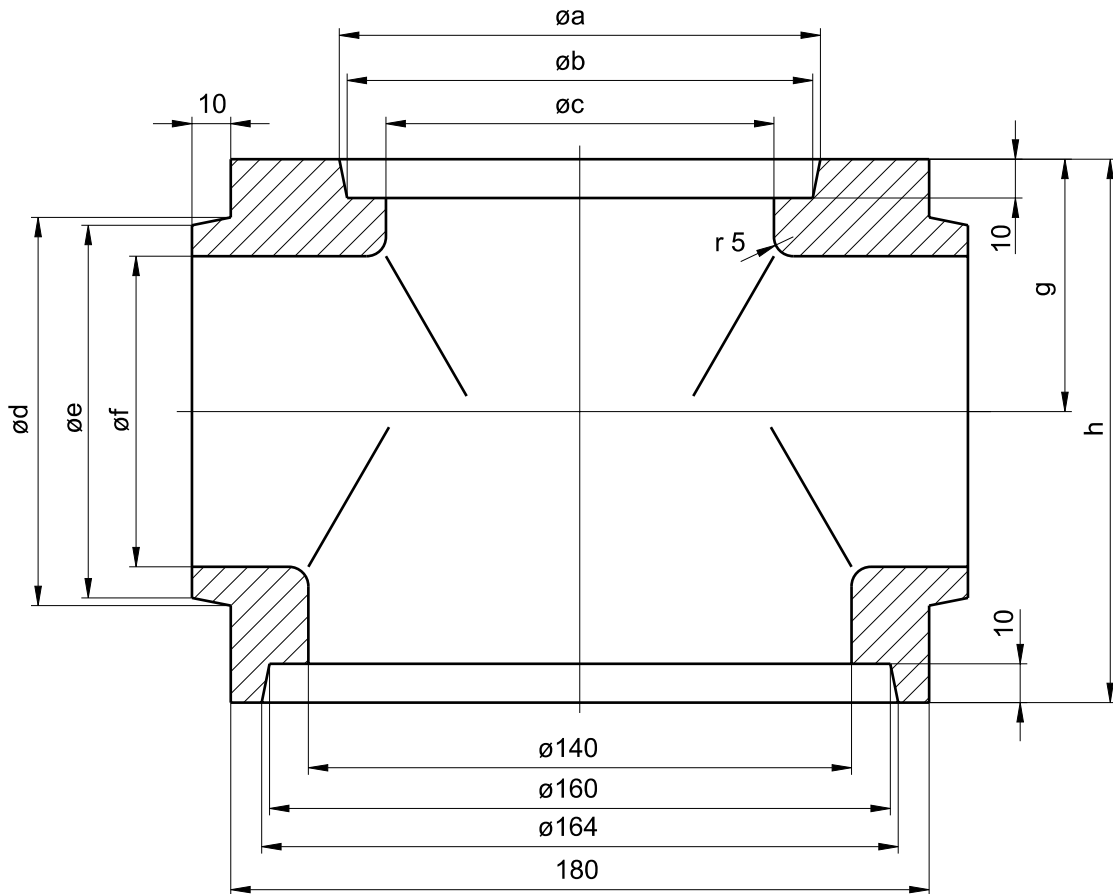
number	type	a (mm)	b (mm)	i (mm)	L (mm)	i1 (mm)	r (mm)	weight gewicht (kg)	pcs/pal. stck/pal.
7825	MAB	50	74	85	130	25	50	1,05	800
7214	MAB	60	90	102	150	30	60	1,75	600
8089	MAB	70	100	120	170	35	70	2,35	423
7215	MAB	80	115	136	200	40	80	3,60	400
7577	MAB	100	140	170	250	50	100	6,35	144
7578	MAB	120	160	205	290	60	120	9,70	90

## DUCK FOOT CROSSED MABQ MESSERANSCHNITTBOGEN MABQ



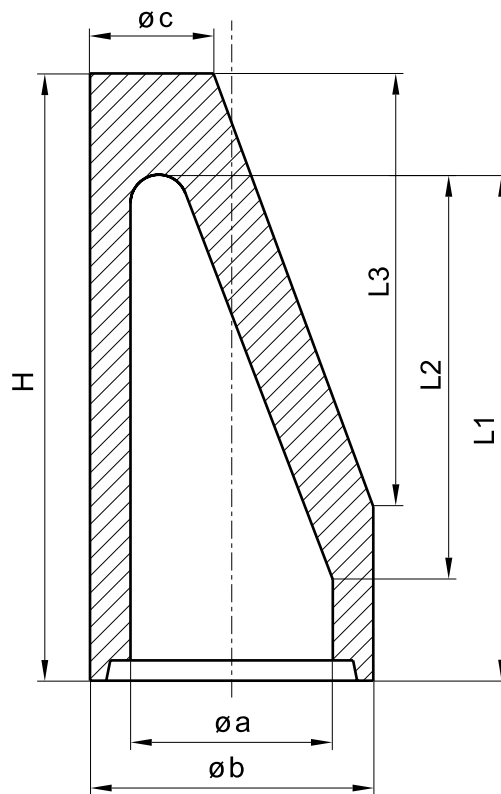
number	type	a (mm)	b (mm)	i (mm)	L (mm)	i1 (mm)	r (mm)	weight gewicht (kg)	pcs/pal. stck/pal.
7213	MABQ	40	70	68	98	20	25	0,85	-
7825	MABQ	50	74	85	110	25	25	1,05	1000
7214	MABQ	60	90	102	132	30	30	1,50	680
8089	MABQ	70	100	120	150	35	32,5	2,10	423
7215	MABQ	80	115	136	166	40	35	3,05	396
7577	MABQ	100	140	170	200	50	40	5,80	192
7578	MABQ	120	160	205	235	60	45	8,00	105

# SLAG DOWN GATE TS SCHLACKENABGANG TS



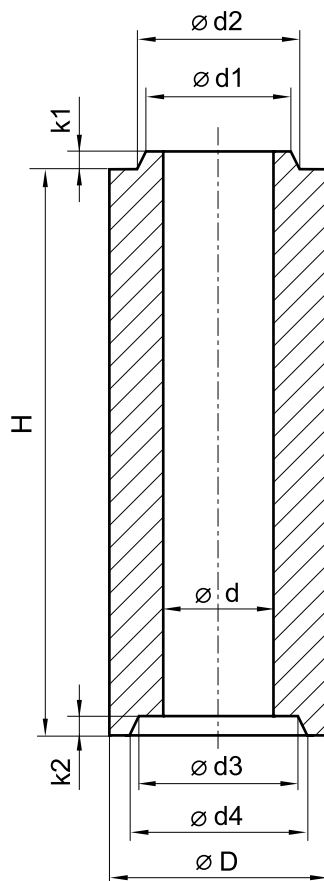
number	type	a (mm)	b (mm)	c (mm)	d (mm)	e (mm)	f (mm)	g (mm)	h (mm)	weight gewicht (kg)	pcs/pal. stck/pal.
7215	TS	124	120	100	100	96	80	65	140	5,00	100
7577	TS	142	138	120	120	116	100	75	150	3,00	100

## SLAG TRAP END TUBE RES SCHLACKENFANGENDSTÜCK RES



number	type	a (mm)	b (mm)	c (mm)	H (mm)	L1 (mm)	L2 (mm)	L3 (mm)	weight gewicht (kg)	pcs/pal. stck/pal.
7215	RES	80	115	57	300	250	200	213	3,60	189
7577	RES	100	140	61	300	250	200	214	5,23	135
7578	RES	120	160	61	300	250	200	214	5,00	60

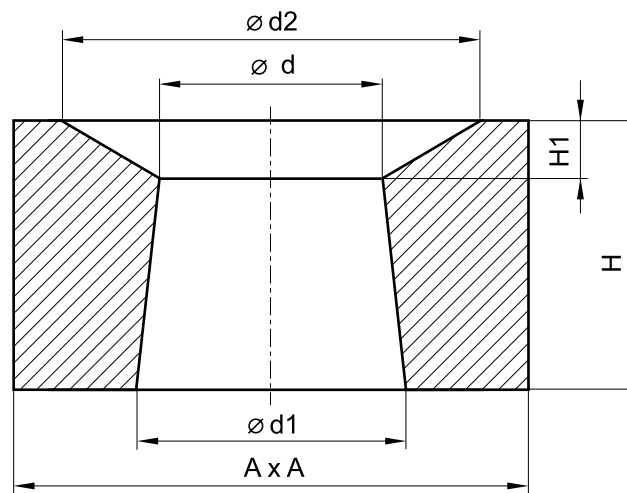
## STOPPER TUBE STOPFENSTANGENROHR



type	d (mm)	D (mm)	H (mm)	d1 (mm)	d2 (mm)	d3 (mm)	d4 (mm)	k1 (mm)	k2 (mm)	weight gewicht (kg)	pcs/pal. stck/pal.
SR0	40	90	270	60	66	62	69	10	12	2,75	336
SR1	47	105	330	70	75,3	72	76,4	10	12	4,60	168
SR2	47	120	330	70	81,5	72	84	10	12	6,40	132
SR2/D200	47	120	200	70	81,5	80	95	10	15	4,50	198
SR3	47	140	330	70	81,5	72	84	10	12	9,00	90
SR4/1	47	155	330	70	82	72	86	10	12	11,20	70
SR4/2	60	155	330	95	107	97	109	10	12	11,00	70
SR5	60	170	330	95	107	97	111	10	12	13,20	56

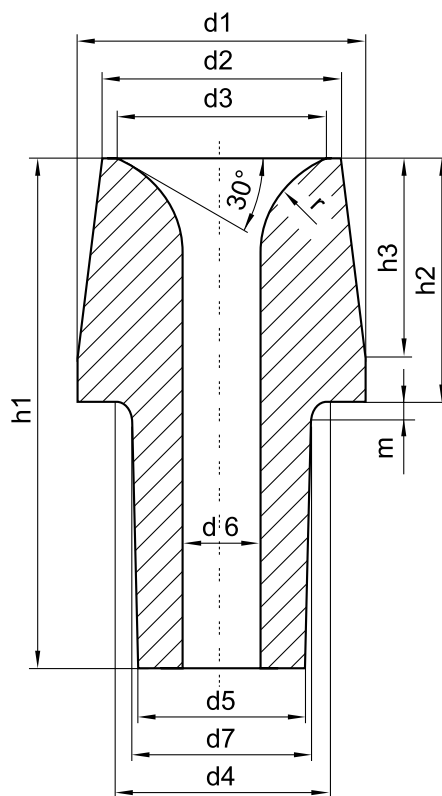
Apart from our standard shapes, other lengths can be manufactured by agreement.  
Außer den Standard formaten ist nach Absprache jede Länge herstellbar.

**POCKET BLOCK  
LOCHSTEIN**



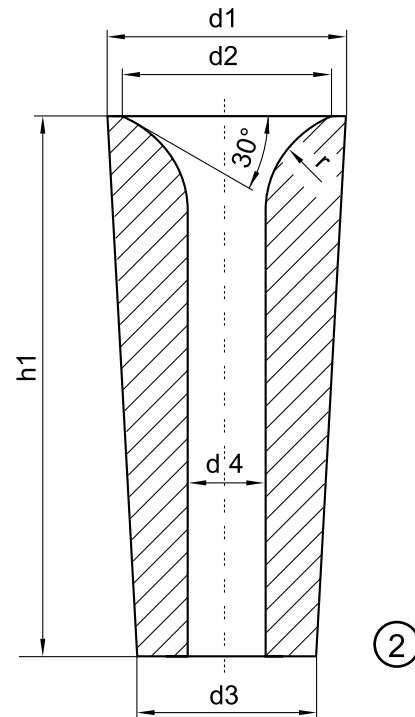
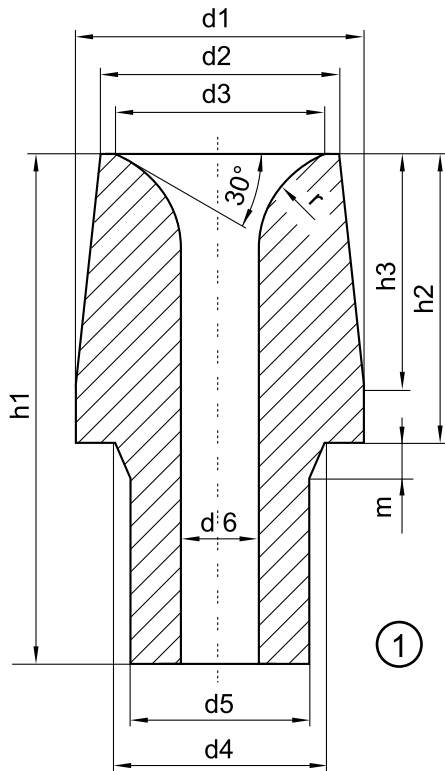
type	d (mm)	d1 (mm)	d2 (mm)	A (mm)	H (mm)	H1 (mm)	weight gewicht (kg)	pcs/pal. stck/pal.
L 1	149	169	260	320	123	23	20,00	50
L 2	143	169	260	320	165	35	26,30	38
L 3	163	194	300	360	190	35	40,00	26

# NOZZLES AUSGÜSSE



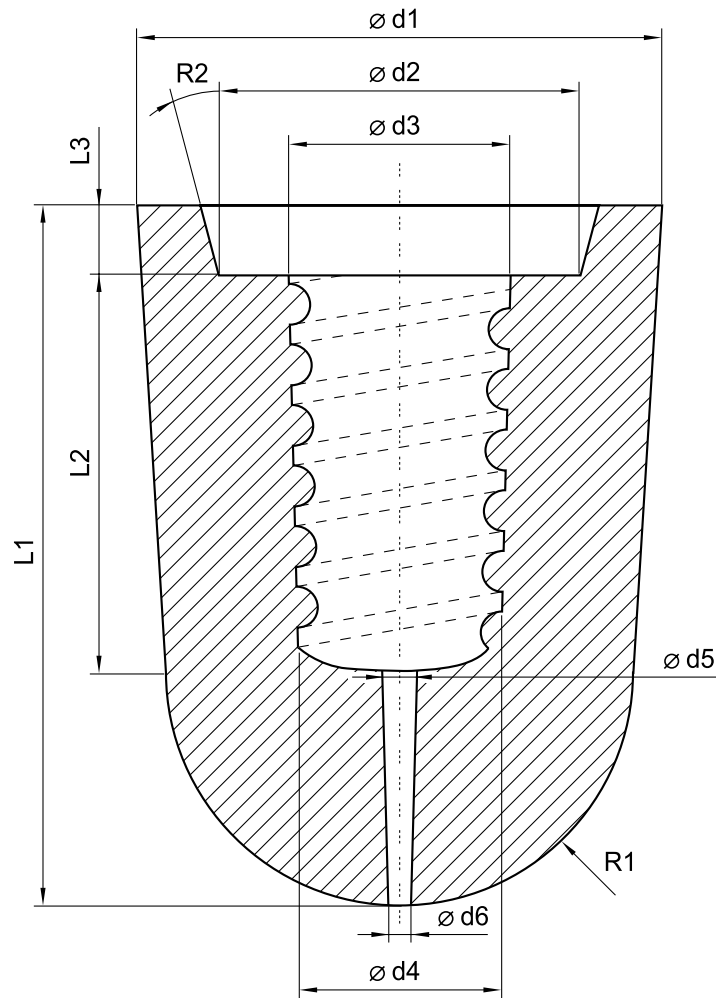
type	d1 (mm)	d2 (mm)	d3 (mm)	d4 (mm)	d5 (mm)	d6 (mm)	d7 (mm)	h1 (mm)	h2 (mm)	h3 (mm)	m (mm)	r (mm)	pcs/pal. stck/pal.
1A30	155	139	115	117	99	30	107	210	100	80	10	50	140
1A35	155	139	115	117	99	35	107	210	100	80	10	50	140
1A40	155	139	115	117	99	40	107	210	100	80	10	50	140
1A45	155	139	115	117	99	45	107	210	100	80	10	50	140
1A50	155	139	115	117	99	50	107	210	100	80	10	50	140
1A55	155	139	115	117	99	55	107	210	100	80	10	50	140
1A60	155	139	115	117	99	60	107	210	100	80	10	50	140
1A70	155	139	115	117	99	70	107	210	100	80	10	50	140
1A80	155	139	115	117	99	80	107	210	100	80	10	50	140
2A25	155	133	115	117	99	25	107	240	130	110	10	50	140
2A30	155	133	115	117	99	30	107	240	130	110	10	50	140
2A35	155	133	115	117	99	35	107	240	130	110	10	50	140
2A40	155	133	115	117	99	40	107	240	130	110	10	50	140
2A45	155	133	115	117	99	45	107	240	130	110	10	50	140
2A50	155	133	115	117	99	50	107	240	130	110	10	50	140
2A55	155	133	115	117	99	55	107	240	130	110	10	50	140
2A60	155	133	115	117	99	60	107	240	130	110	10	50	140
2A65	155	133	115	117	99	65	107	240	130	110	10	50	140
3A35	180	153	135	140	115	35	123	275	155	135	20	50	72
3A40	180	153	135	140	115	40	123	275	155	135	20	50	72
3A45	180	153	135	140	115	45	123	275	155	135	20	50	72
3A50	180	153	135	140	115	50	123	275	155	135	20	50	72
3A60	180	153	135	140	115	60	123	275	155	135	20	50	72
3A70	180	153	135	140	115	70	123	275	155	135	20	50	72
3A80	180	153	135	140	115	80	123	275	155	135	20	50	72
3A90	180	153	135	140	115	90	123	275	155	135	20	50	72
3A100	180	153	135	140	115	100	123	275	155	135	20	50	72
3A120	180	153	140	162	155	120	160	275	155	135	5	20	72

# NOZZLES AUSGÜSSE



type	model	d1 (mm)	d2 (mm)	d3 (mm)	d4 (mm)	d5 (mm)	d6 (mm)	h1 (mm)	h2 (mm)	h3 (mm)	m (mm)	r (mm)	pcs/pal. stck/pal.
0A20	1	135	120	105	100	90	20	160	90	75	10	50	216
0A30	1	135	120	105	100	90	30	160	90	75	10	50	216
0A40	1	135	120	105	100	90	40	160	90	75	10	50	216
0A45	1	135	120	105	100	90	45	160	90	75	10	50	216
0A50	1	135	120	105	100	90	50	160	90	75	10	50	216
0A60	1	135	120	105	100	90	60	160	90	75	10	50	216
6A30	2	133	115	99	30	-	-	170	-	-	-	50	240
6A40	2	133	115	99	40	-	-	170	-	-	-	50	240
6A50	2	133	115	99	50	-	-	170	-	-	-	50	240
6A60	2	133	115	99	60	-	-	170	-	-	-	50	240
6A70	2	133	115	99	70	-	-	170	-	-	-	50	240
7A50	2	139	115	99	50	-	-	200	-	-	-	50	240

# STOPPERS STOPFEN





type	L1 (mm)	L2 (mm)	L3 (mm)	d1 (mm)	d2 (mm)	d3 (mm)	d4 (mm)	d5 (mm)	d6 (mm)	R1 (mm)	R2	pcs/pal. stck/pal.
S 0	120	80	12	90	62	38	35	6	4	40	15°	624
S 1	130	95	12	105	72	42	39	6	4	45	15°	385
S 2	135	95	12	120	72	42	39	6	4	53	30°	324
S 3	145	95	12	140	72	42	39	6	4	60	30°	240
S 4/1	155	90	12	155	72	42	39	6	4	65	30°	175
S 4/2	155	90	12	155	97	42	39	6	4	65	30°	175
S 5	170	90	12	170	97	42	39	6	4	68	30°	60

## NOTES

## NOTES



# TECHNICAL CERAMICS OF THE 3RD MILLENNIUM


  
 ISO 9001

**Závod 01 MKZ Šamotka**  
**Plant 01 MKZ Fireclay Factory**  
**Werk 01 MKZ Schamottefabrik**

Spešovská 243  
 679 02 Rájec-Jestřebí  
 Czech Republic

tel/phone: +420 516 526 111  
 fax: +420 516 432 241

**Závod 02 MKZ Žárohmoty**  
**Plant 02 MKZ Refractory Masses**  
**Werk 02 MKZ Feuerfeste Massen**

Spešovská 243  
 679 02 Rájec-Jestřebí  
 Czech Republic

tel/phone: +420 516 526 111  
 fax: +420 516 432 241


Provoz Svitavy  
 Branch Svitavy  
 Abteilung Svitavy

Milady Horákové 38  
 679 02 Svitavy  
 Czech Republic

tel/phone: +420 516 526 200  
 fax: +420 516 526 222


 MORAVSKÉ KERAMICKÉ ZÁVODY





**Závod 03 KERAVIT**  
**Plant 03 KERAVIT**  
**Werk 03 KERAVIT**

Kotěrova 3  
 706 02 Ostrava  
 Czech Republic

tel/phone: +420 597 357 949  
 fax: +420 597 357 724

**Závod 04 REFRAMO**  
**Plant 04 REFRAMO**  
**Werk 04 REFRAMO**

Věžní 734  
 432 01 Kadaň  
 Czech Republic

tel/phone: +420 474 698 011  
 fax: +420 474 698 016

1985 založeno  
 established  
 etabliert

založeno  
 established  
 etabliert 1981

založeno  
 established  
 etabliert 1907 1989

## SEEIF Ceramic, a.s.

Spešovská 243  
679 02 Rájec-Jestřebí  
Czech Republic

tel/phone: +420 516 526 111  
fax: +420 516 432 241  
e-mail: info@seeifceramic.cz

www.seeifceramic.cz



# SEEIF Ceramic, a.s.